

vtech[®]
Baby

User's Manual

Sort & Learn Van™



© 2006 VTech

Printed in China

91-70100-000-006 (美)

Dear Parent:

*Ever notice the look on your baby's face when they learn something new through their own discovery? These self-accomplished moments are a parent's greatest reward. To help fulfill them, VTech® created the **Infant Learning**, series of toys.*

*These unique interactive learning toys directly respond to what children do naturally – play! Using innovative technology, these toys react to baby's interactions, making each play experience fun and unique as they learn age-appropriate concepts like first words, numbers, shapes, colors and music. More importantly, VTech®'s **Infant Learning** toys develop baby's mental and physical abilities by inspiring, engaging and teaching.*

At VTech®, we know that a child has the ability to do great things. That's why all of our electronic learning products are uniquely designed to develop a child's mind and allow them to learn to the best of their ability. We thank you for trusting VTech® with the important job of helping your child learn and grow!

Sincerely,

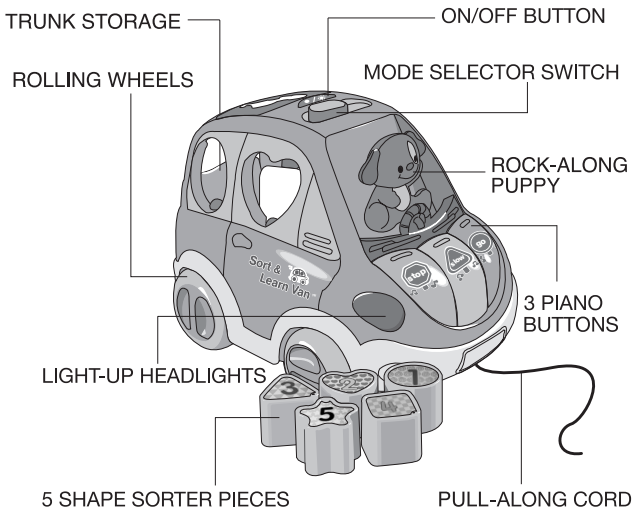
Your Friends at VTech®

*To learn more about **Infant Learning**, and other VTech® toys, visit www.vtechkids.com*

INTRODUCTION

Thank you for purchasing the **Sort & Learn Van™** learning toy!

Get baby on the road to learning with the **Sort & Learn Van™**. This fun pull toy teaches baby numbers, colors, shapes, objects, safety phrases, and music. The **Sort & Learn Van™** sorts 5 shapes, includes 3 piano keys, and 3 colorful buttons that teach stop, slow down and go. The playful puppy driver moves from side to side when the van is pushed or pulled. And, headlights light up just like the real thing! Let's get rolling!



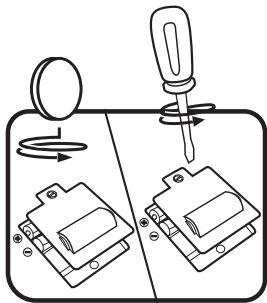
INCLUDED IN THIS PACKAGE

- One **Sort & Learn Van™** learning toy
- Five shape sorter pieces
- One user's manual

WARNING: All packing materials, such as tape, plastic sheets, wire ties and tags are not part of this toy, and should be discarded for your child's safety.

BATTERY INSTALLATION

1. Make sure the unit is turned **OFF**.
2. Locate the battery cover on the bottom of the unit. Use a coin or a screwdriver to loosen the screw.
3. Install 2 new “AA” (UM-3/ LR6) batteries following the diagram inside the battery box. (The use of new alkaline batteries is recommended for maximum performance.)
4. Replace the battery cover and tighten the screw to secure.



BATTERY NOTICE

- Install batteries correctly observing the polarity (+, -) signs to avoid leakage.
- Do not mix old and new batteries.
- Do not use batteries of different types.

- Remove batteries from the equipment when the unit will not be used for an extended period of time.
- Do not dispose of batteries in fire.
- Do not attempt to recharge ordinary batteries.
- The supply terminals are not to be short-circuited.
- Only batteries of the same and equivalent type as recommended are to be used.
- Do not mix alkaline, standard (carbon-zinc) or rechargeable (nickel-cadmium) batteries.

WE DO NOT RECOMMEND THE USE OF RECHARGEABLE BATTERIES.

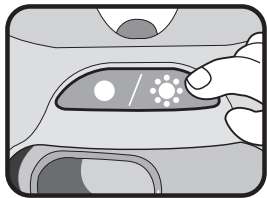
PRODUCT FEATURES

1. ON/OFF BUTTON

To turn the unit on, press the **ON/OFF BUTTON** on the top. To turn the unit off, press the **ON/OFF BUTTON** again.

2. AUTOMATIC SHUT-OFF

To preserve battery life, the **VTech® Sort & Learn Van™** will automatically power-down after 45 seconds without input. The unit can be turned on again by pressing the On/Off button.



3. MODES OF PLAY

The two modes of play include **LEARN** and **MUSIC**.

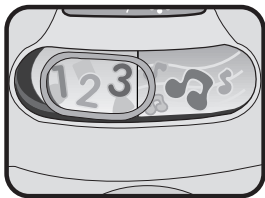
ACTIVITIES

1. To turn the unit on, press the **on/off button** on top of the car.

In the **Learn Mode**, you will hear sounds, phrases and a sung song.

In the **Music Mode**, you will hear sounds, phrases and a melody.

The headlights will flash with the sounds.



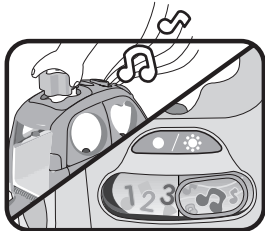
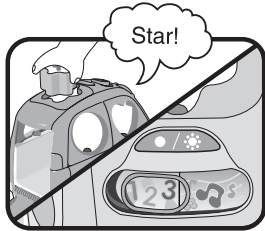
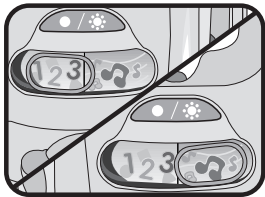
2. Insert the **shape sorter pieces** into the correct spaces.

In the **Learn Mode**, you will hear the shape identified, fun phrases and sound effects.

In the **Music Mode**, you will hear the shape identified and a melody. When a melody is playing, insert the **shape sorter pieces** again and a variety of fun sounds will jam into the melody.

Open the trunk to release the shapes.

The headlights will flash with the sounds.

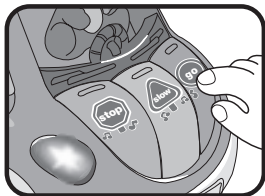


3. Press the **three piano buttons** on the hood of the car.

In the **Learn Mode**, you will hear the colors identified, road safety phrases and a shape finding game. Correctly find the shapes within 5 seconds to hear a short rewarding tune. If you answer incorrectly or after five seconds, you will hear the normal reaction of the shape button.

In the **Music Mode**, you can play musical notes.

When a melody is playing, press the **green piano button** to speed up the tempo, the **yellow piano button** to slow down the tempo or the **red piano button** to stop the melody. The headlights will flash with the sounds.

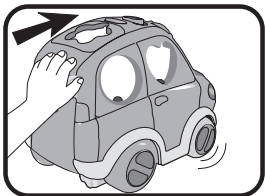


4. Pull or push the car along (the pull-along cord can be found or stored away in the battery compartment). In the **Learn Mode**, you will hear fun phrases or a sung song.

In the **Music Mode**, you will hear the sung song and melodies sung by the puppy.

The headlights will flash with the sounds.

The puppy will rock from side to side as the car is pulled along.



5. If there is no input to the unit after approximately 15 seconds, you will be asked to find a piano key. After another 15 seconds if there is still no input, the unit will play the theme song. If there continues to be no input to the unit, it will say “bye-bye”, then the unit will automatically power down.

MELODY LIST

1. London Bridge
2. The Wheels on the Bus
3. Oh My Darling, Clementine
4. This Old Man
5. Pop! Goes The Weasel
6. Twinkle, Twinkle, Little Star

SUNG SONG LYRICS (to the tune of London Bridge)

Make the road a safer place,
All hold hands,
Please don't race!
Stop and listen,
Look both ways,
When you're crossing.

CARE & MAINTENANCE

1. Keep the unit clean by wiping it with a slightly damp cloth.
2. Keep the unit out of direct sunlight and away from any direct heat source.
3. Remove the batteries when the unit will not be in use for an extended period of time.
4. Do not drop the unit on hard surfaces and do not expose the unit to moisture or water.

TROUBLESHOOTING

If for some reason the program/activity stops working or malfunctions, please follow these steps:

1. Please turn the unit **OFF**.
2. Interrupt the power supply by removing the batteries.
3. Let the unit stand for a few minutes, then replace the batteries.
4. Turn the unit **ON**. The unit should now be ready to play again.
5. If the product still does not work, replace with an entire set of new batteries.

If the problem persists, please call our Consumer Services Department at 1-800-521-2010 in the U.S. or 1-877-352-8697 in Canada, and a service representative will be happy to help you.

For information on this product's warranty, please call **VTech®** at 1-800-521-2010 in the U.S. or 1-877-352-8697.

IMPORTANT NOTE:

Creating and developing **Infant Learning** products is accompanied by a responsibility that we at **VTech®** take very seriously. We make every effort to ensure the accuracy of the information, which forms the value of our products. However, errors sometimes can occur. It is important for you to know that we stand behind our products and encourage you to call our Consumer Services Department **1-800-521-2010 in the U.S.** or **1-877-352-8697 in Canada**, with any problems and/or suggestions that you might have. A service representative will be happy to help you.

Note:

This equipment has been tested and found to comply with the limits for a Class B digital device, pursuant to Part 15 of the FCC Rules. These limits are designed to provide reasonable protection against harmful interference in a residential installation. This equipment generates, uses and can radiate radio frequency energy and, if not installed and used in accordance with the instructions, may cause harmful interference to radio communications. However, there is no guarantee that interference will not occur in a particular installation. If this equipment does cause harmful interference to radio or television reception, which can be determined by turning the equipment off and on, the user is encouraged to try to correct the interference by one or more of the following measures:

- Reorient or relocate the receiving antenna
- Increase the separation between the equipment and receiver
- Connect the equipment into an outlet on a circuit different from that to which the receiver is connected
- Consult the dealer or an experienced radio/TV technician for help

Caution : changes or modifications not expressly approved by the party responsible for compliance could void the user's authority to operate the equipment.